

MONTHLY MEMBERSHIP PROGRESS REPORT

LOCATION NEW ZEALAND

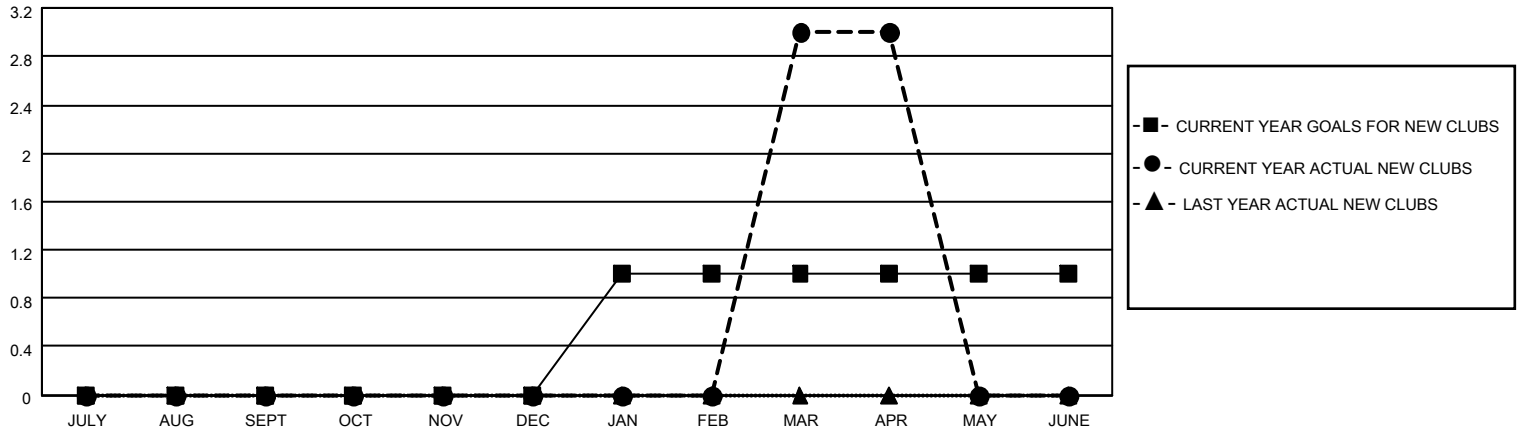
District 202 E

Results as of: 4/30/2021

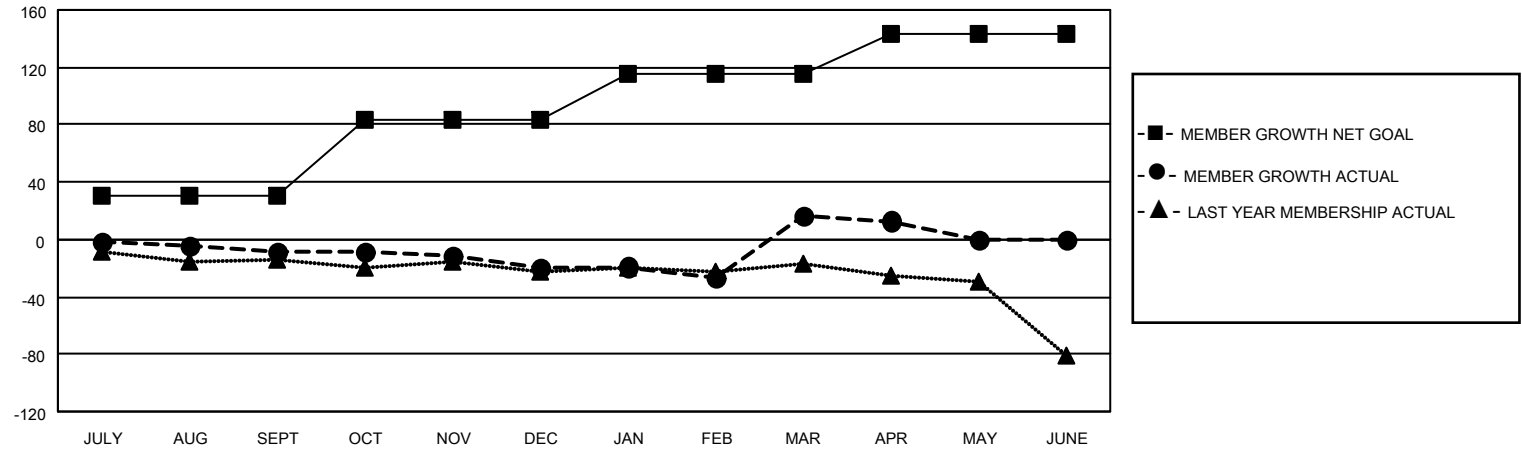
Clubs			
RESULTS FOR 2020-2021			
QUARTER	NEW CLUB GOAL	NEW CLUBS	DROPPED CLUBS
JULY/AUG/SEPT	0	0	0
OCT/NOV/DEC	0	0	0
JAN/FEB/MAR	1	3	1
APR/MAY/JUNE	0	0	0

Members			
RESULTS FOR 2020-2021			
QUARTER	MEMBER GROWTH NET GOAL	MEMBER GROWTH ACTUAL	DROPPED MEMBERS ACTUAL (including transfers)
JULY/AUG/SEPT	30	34	39
OCT/NOV/DEC	54	25	34
JAN/FEB/MAR	32	64	24
APR/MAY/JUNE	27	7	8

GOALS AND ACTUAL NEW CLUBS CUMULATIVE



GOALS AND ACTUAL MEMBERS CUMULATIVE



DROPPED CLUBS: 1	
DROPPED MEMBERS	
DECEASED	13
CLUB CANCELLED	0
OTHER	92
TOTAL	105

36 CLUBS OF 50 ADDED 1 OR MORE NEW MEMBERS

[CLICK HERE FOR CUMULATIVE MEMBERSHIP DATA](#)

<u>GENDER DISTRIBUTION</u>	
MALE	863 (70.80%)
FEMALE	356 (29.20%)

TOTAL FAMILY UNIT MEMBERS	102
FAMILY MEMBERS PAYING HALF DUES	52